

2024 IMPACT REPORT



Westmoreland County LIBRARIES

www.wclibraries.org



OUR VISION: Westmoreland County Libraries is committed to leading the County libraries forward by ensuring they remain beneficial to the communities they serve.

WCL Office . 226 Donohoe Road, Suite 202 . Greensburg, PA 15601 . (724) 420-5638

OUR MISSION

Westmoreland County Libraries (WCL) is dedicated to achieving excellence in library and information services for all County residents through the coordination of resources and services, the sharing of information expertise, and the promotion of library staff development for the mutual benefit of all member libraries.



Westmoreland County Libraries (WCL) is an alliance of 26 public libraries in Westmoreland County, and is one of 29 District Centers under the Office of Commonwealth Libraries, PA Department of Education.



OUR ACCOMPLISHMENTS



2024 was a year of transition for Westmoreland County Libraries (WCL), marked with renewed purpose, collaboration, and community connection.

We welcomed several new Library Directors and staff, including our Executive Director, who entered the position just in time for a comprehensive rebranding project. The resulting logo - shaped through thoughtful conversations with library staff, volunteers, and community members - represents patrons, community, growth, approachability, and depth of service. We were encouraged to learn that the public views Westmoreland County Libraries as friendly, accessible, and knowledgeable - three attributes that affirm our mission and guide our ongoing work.

Community conversations provide valuable insights that extend well beyond the creation of a logo. They inform our broader efforts and build on our community partnerships like the Westmoreland County Food Bank. We assisted with their countywide food drive - spreading the word and acting as collection sites. Another example is our collaboration with six local museums, allowing us to offer free family passes to Bushy Run Battlefield, Fort Ligonier, Greensburg Volunteer Fire Department Museum, Lincoln Highway Experience, West Overton Museum, and Westmoreland Museum of American Art. These efforts not only expand access to enriching experiences but also reinforce our role as a connector of people, ideas, and opportunities.

The accomplishments contained in this impact report are a testament to the power of libraries to adapt, inspire, and serve. We remain committed to listening, learning, and evolving in response to community feedback.

Borrow a museum!

Westmoreland County Libraries have again partnered to offer FREE admission to FIVE different museums!



Stop by to borrow a set of passes for FREE admission for 2 adults and up to 4 children. Keep them for one week!

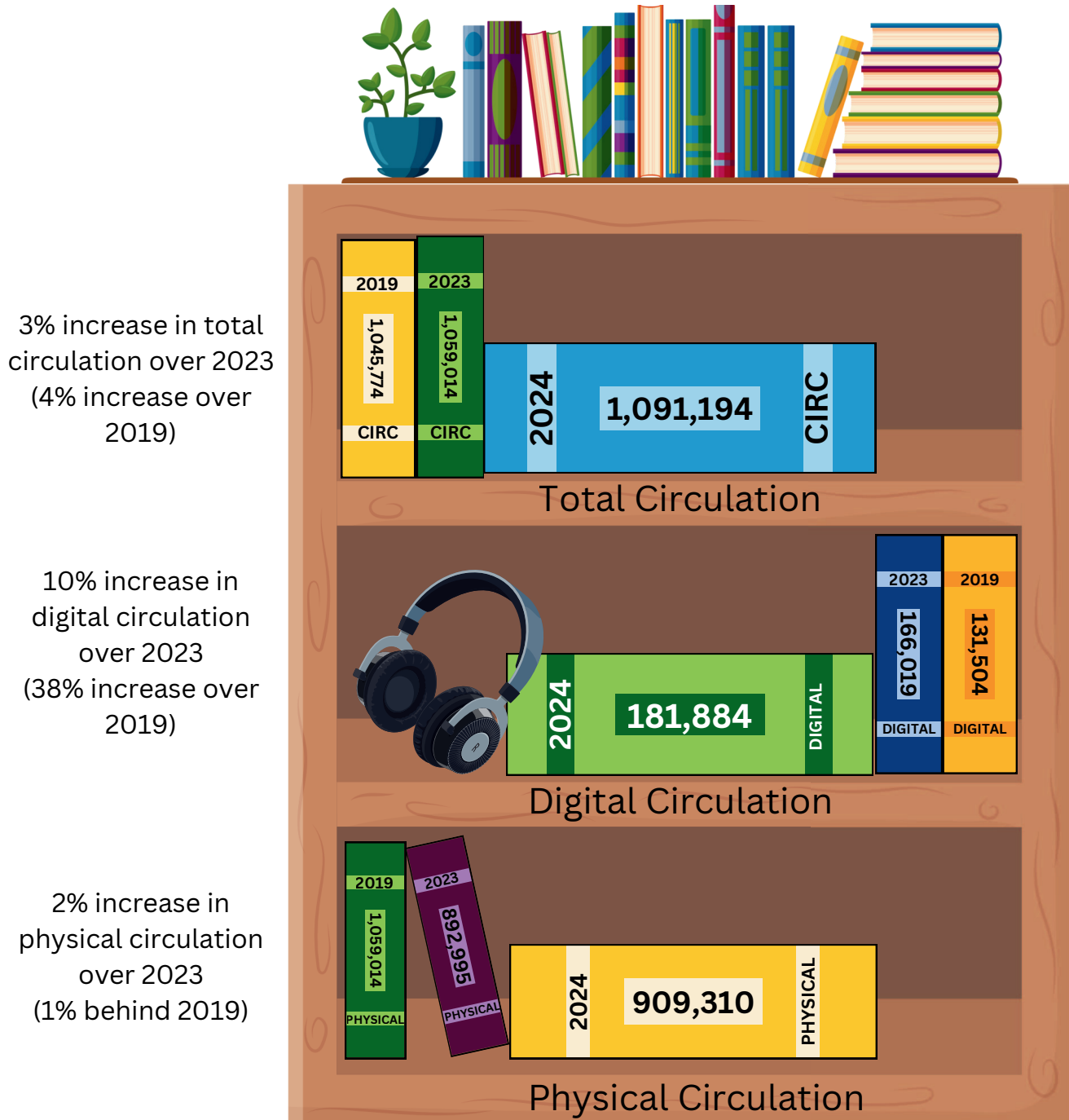
Our Team

Naomi Cross, Executive Director
Melinda Tanner, District Consultant
Joe Fee, IT Manager
Edwina Zack, Business Manager
Kenneth O'Toole, IT Support Technician
Diane Nowakowski, Administrative Assistant

Our Board

Bill Scheeren, President
Celine Kandala, Vice President
Mary Stubbs, Secretary
Lynn Wackenhuth, Treasurer
Pam Hysong, Member
Annette Kostelnik, Member
Barbara Matheny, Member

WHAT PEOPLE BORROWED



*Pandemic years are considered outliers and excluded from statistic comparisons

THE BOOKS (& MORE)



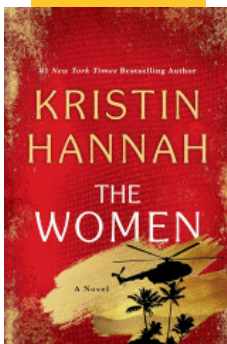
811,637

items available to borrow
6% increase over 2023



TOP PICKS

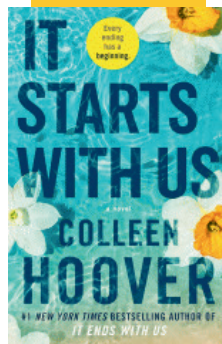
BOOK



MOVIE



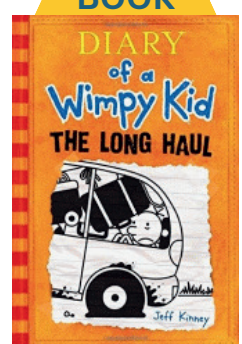
EBOOK



EAUDIO



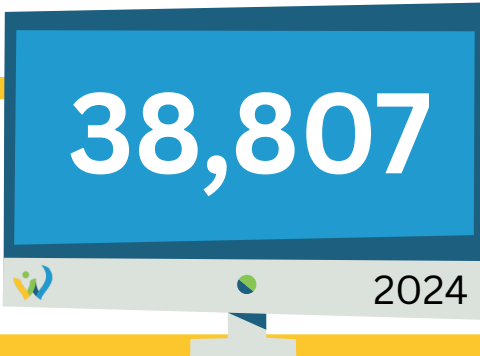
JUVENILE
BOOK



55,740

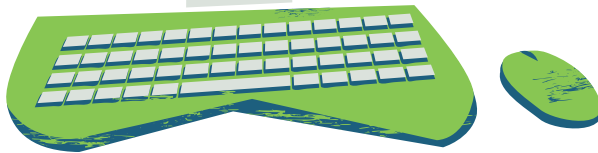
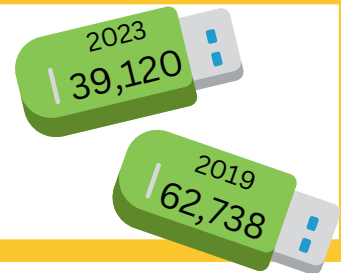
registered library cardholders
7% increase over 2023

DIGITAL CONNECTIONS

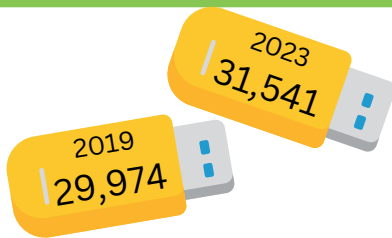


Public Computer Sessions

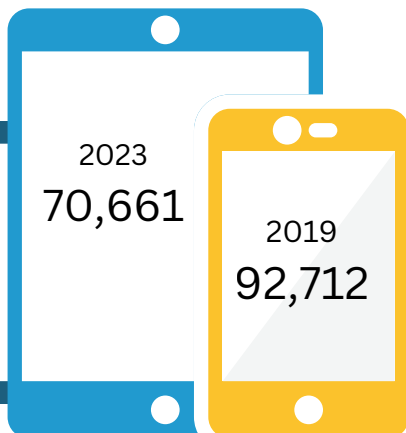
9% decrease in
public computer use
since 2023
(38% less than 2019)



Wireless Internet Connections



9% increase in
wireless connections
over 2023
(15% more than 2019)



Total Computer and Wi-Fi sessions

4% increase in
overall connections
compared to 2023
(21% less than 2019)

2024
73,228

353,943 HOURS of FREE Internet access

6% increase in hours compared to 2023

ONLINE RESOURCES



188,248

requests made
through these
resources

Candid.

kanopy
stream smarter

Libby.

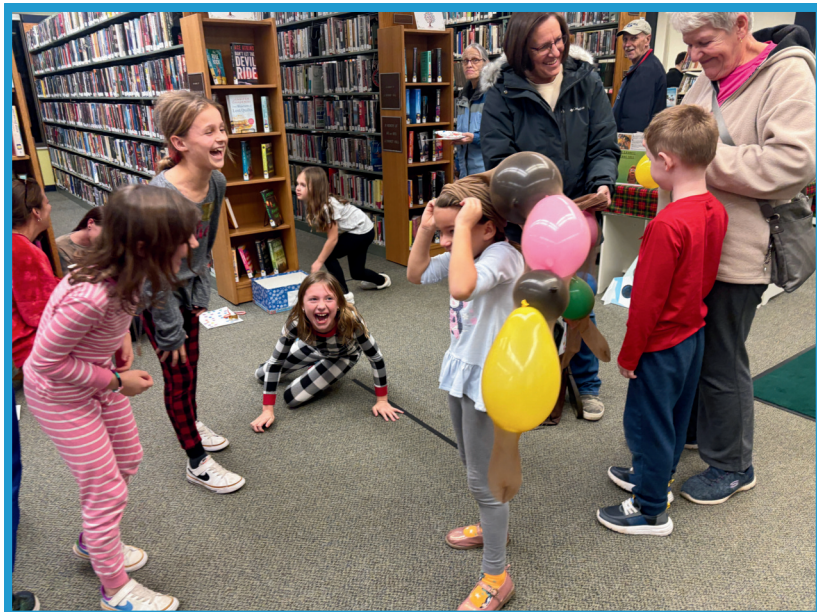
NoveList
Plus

Westmoreland County Libraries
users also have 24/7 access to:



This project is made possible in part by Library Services and Technology Act (LSTA) funds from the U.S. Institute of Museum and Library Services and through the Commonwealth of Pennsylvania's Library Access funds administered by the Pennsylvania Department of Education, Office of Commonwealth Libraries. The views, findings, conclusions, or recommendations expressed in this website do not necessarily represent those of the U.S. Institute of Museum and Library Services or the Pennsylvania Department of Education.

WHO WE SAW



658,963

visits to WCL member libraries
5% increase over 2023

99,688

people attended library programs
1% increase over 2023





WHAT THEY SAW

5,441

programs

for kids, teens, and adults

28% increase over 2023!



Community Partnership Programs included organizations like:

CareerLink

Jacobs Creek Watershed

Mountain Watershed Association

Pittsburgh Ballet

Westmoreland Cleanways & Recycling

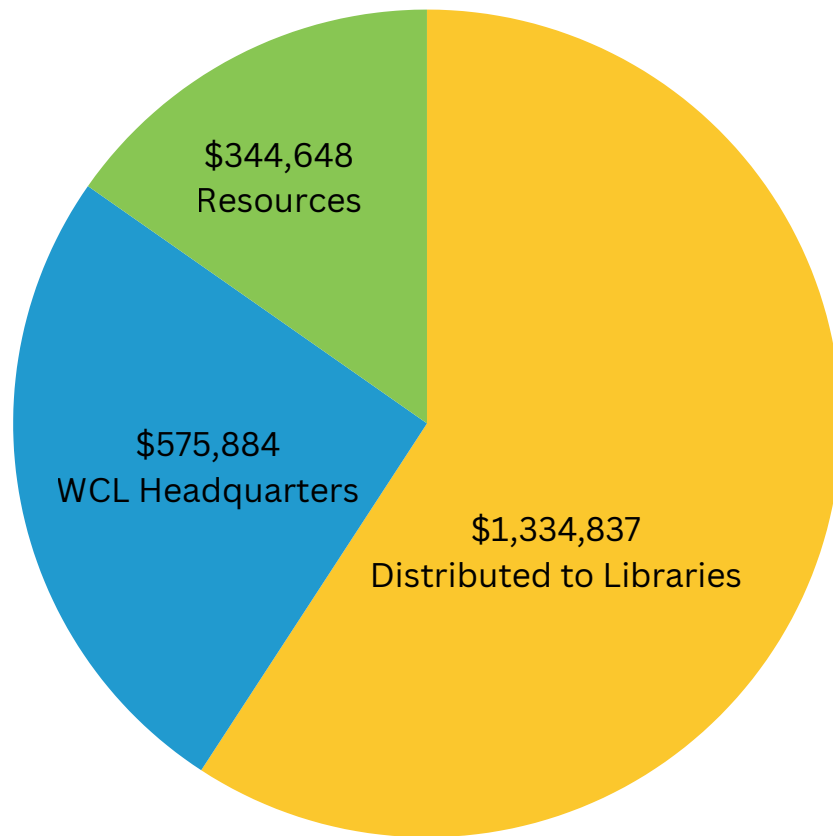
Westmoreland Food Bank

Westmoreland Land Trust

Westmoreland Museum of American Art



WHERE DOES MONEY GO?



Westmoreland County Libraries Headquarters is responsible for:

- the distribution of State and County Aid to Member Libraries
- accountability for State Library Regulations compliance
- management of the countywide online library catalog
- technology infrastructure and support
- countywide delivery of materials
- providing access to online resources for the improvement of library services
- professional development for library staff and trustees

RETURN ON INVESTMENT : \$5.51 for every \$1



Libraries across PA average an ROI of \$5.50 for every \$1
The average of Westmoreland County's specifically is \$5.51



FIVE WAYS YOU CAN SUPPORT LIBRARIES

1

Use Your Library Card

Don't have one? Visit us and sign up today! It's quick and easy, and FREE! Using our library and borrowing from our collection shows our importance to the community and our need for funding.



2

Come to Library Events

Bring your friends and family, spread the word! Community engagement helps us to know what types of programs to provide.



3

Engage on Social Media

Follow us and like our page! All likes, comments, shares, and tags assist in broadening our reach.



4

Make a Donation

Donate online, over the phone, or by mail. You may make donations in someone's honor as well. All of this helps us to provide more resources and programming!



5

Contact Your Elected Officials

Love your library? Let them know! Call or email your local and state elected officials to share your experiences and support.



Adams Memorial Library
1112 Ligonier Street
Latrobe, PA 15650
724-539-1972

Branch: Caldwell Memorial Library
988 N. Chestnut Street Ext.
Derry, PA 15627
724-694-1401 x 3110

Avonmore Public Library
437 Westmoreland Avenue
Avonmore, PA 15618
724-697-4828

Belle Vernon Public Library
505 Speer Street
North Belle Vernon, PA 15012
724-929-6642

Delmont Public Library
75 School Street
Delmont, PA 15626
724-468-5329

Greensburg Hempfield Area Library
237 S. Pennsylvania Avenue
Greensburg, PA 15601
724-837-5620

Branch: Youngwood Area Public Library
17 S. 6th Street
Youngwood, PA 15697
724-925-9350

Jeannette Public Library
500 Magee Avenue
Jeannette, PA 15644
724-523-5702

Ligonier Valley Library
120 West Main Street
Ligonier, PA 15658
724-238-6451

Manor Public Library
44 Main Street Suite 500
Manor, PA 15665
724-864-6850

Monessen Public Library
326 Donner Avenue
Monessen, PA 15062
724-684-4750

Mount Pleasant Free Public Library
120 S Church Street
Mount Pleasant, PA 15666
724-547-3850

Murrysville Community Library
4130 Sardis Road
Murrysville, PA 15668
724-327-1102

Norwin Public Library
100 Caruthers Lane
Irwin, PA 15642
724-863-4700

Penn Area Library
2001 Municipal Court
Harrison City, PA 15636
724-744-4414

Branch: Trafford Community Public Library
416 Brinton Avenue
Trafford, PA 15085
412-372-5115

Peoples Library New Kensington
880 Barnes Street
New Kensington, PA 15068
724-339-1021

Branch: Peoples Library Lower Burrell
3052 Wachter Avenue
Lower Burrell, PA 15068
724-339-1565

Rostraver Public Library
700 Plaza Drive
Rostraver Township, PA 15102
724-379-5511

Branch: Smithton Public Library
615 Center Street
Smithton, PA 15479
724-872-0701

Scottdale Public Library
106 Spring Street
Scottdale, PA 15683
724-887-6140

Sewickley Township Public Library
312 Sewickley Avenue
Herminie, PA 15637
724-446-9940

Vandergrift Public Library
128 C Washington Avenue
Vandergrift, PA 15690
724-568-2212

West Newton Public Library
124 N Water Street
West Newton, PA 15089
724-633-0798

